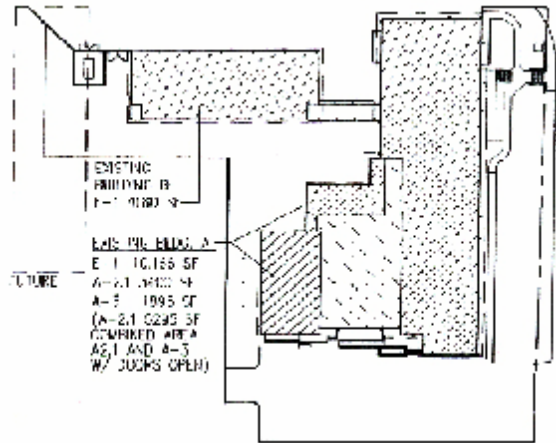


## *Big Lake Elementary School*



The **Big Lake Elementary School** project involved the renovation of classroom facilities and a gymnasium. A significant amount of civil work was necessary to complete this project, including paving a large parking lot, earthwork and utilities. This project required a large renovation to be finished within a short time frame of 90 days in order for the school to meet its deadline. Ebenal General successfully completed this project within this time constraint while keeping true to high quality craftsmanship.



- ◆ Owner: Sedro Woolley School District
- ◆ Architect: Harthorne Hagen Architects
- ◆ Completed: September 2001
- ◆ Contractor: Ebenal General

